

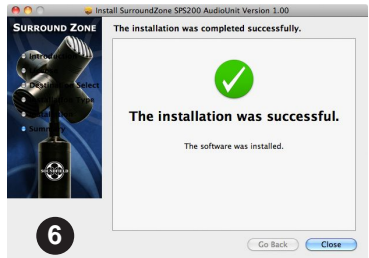
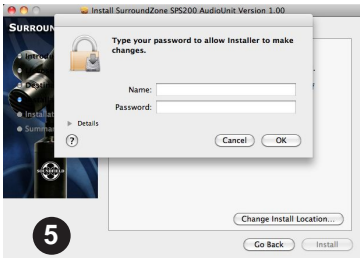
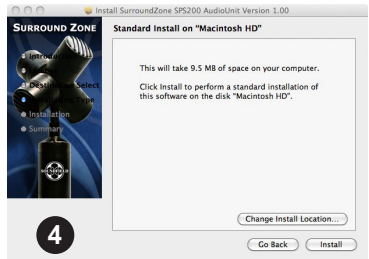
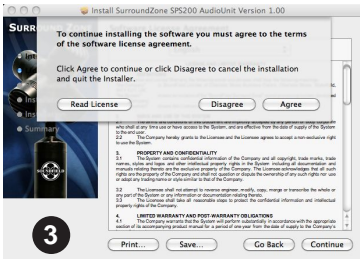
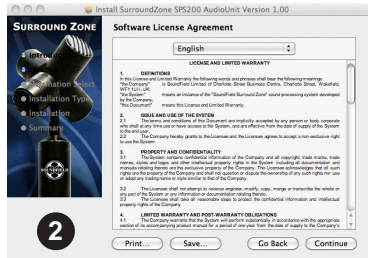
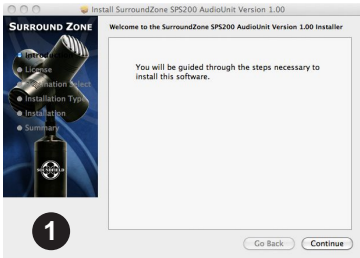


## SPS200 Surround Zone Quick Start Guide For AU

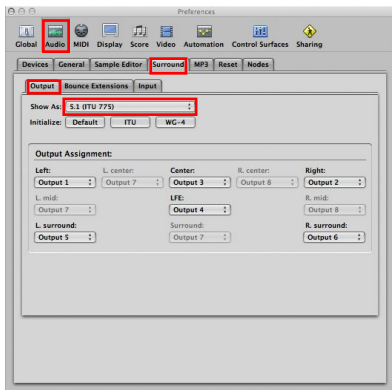
The SPS200 Surround Zone plug-in is available for Mac based AU hosts and the installer for this software is available on the CD-ROM or on our website (always check the website for the most up to date version of the software before commencing installation).

### To install your AU version of the SPS200 Surround Zone:

Insert the CD-ROM and double click the Surround Zone AU installer **SPS200SzoneAUV100.pkg** this will start the installer. Simply follow the on-screen instructions to complete the installation, this should take no more than a few minutes.



## Get started with the SPS200 Surround Zone plug-in using Logic Audio:



Within Logic Audio the surround format is set as a global project preference. To use the SPS200 Surround Zone plug-in the surround format should be set to 5.1 (ITU 775).

This is done in the:

**preferences/audio/surround/output** pane as shown on the left.



The easiest way to insert the SPS200 Surround Zone plug-in is as follows:

- 1 Add a surround track to your project.
- 2 Insert the SPS200 Surround Zone plug-in into the surround track (by clicking on the insert tab). The plug-in will appear under the Audio Units/SoundField Ltd tab.
- 3 Import your four channel A-Format wav file into the surround track. The A-Format wav file should be in the following order: **1. LF 2. RF 3. LB 4. RB**